

Busting Man-made weather anomalies

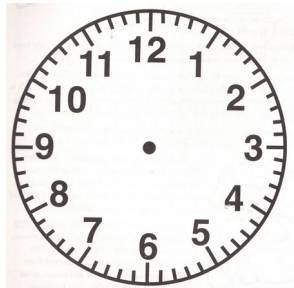
1. Get your geo-position.

Identify the directions – North, East, South, West.

Align your chart with the compass North. 12:00 is North.

You will need a digital chart so you can superimpose it on a real time satellite map from reputable weather trackers.

You will need a hardcopy chart and ruler to assist you in orienting your pyramid.



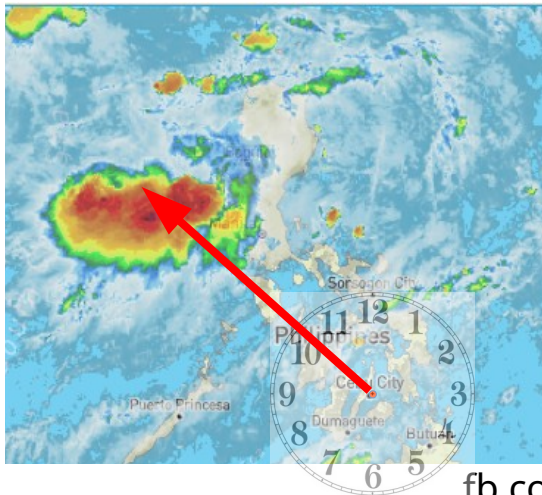
Busting Man-made weather anomalies

2. Get a weather map

Identify your location.

Determine the location of the anomaly.

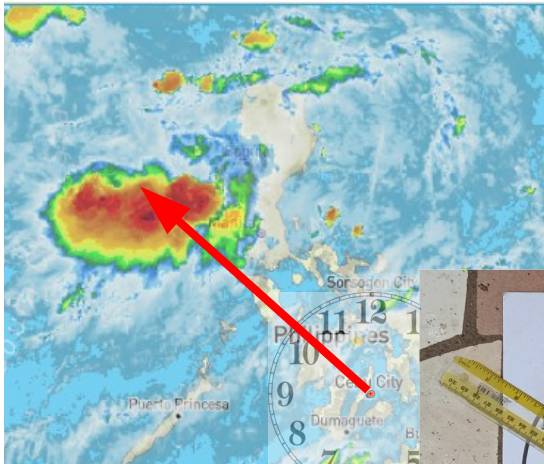
With your location as center of the chart, draw a line from your location to the selected area in the anomaly. That's your horizontal bearing.



Busting Man-made weather anomalies

3. Set up your pyramid/tower.

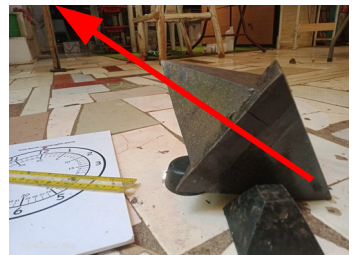
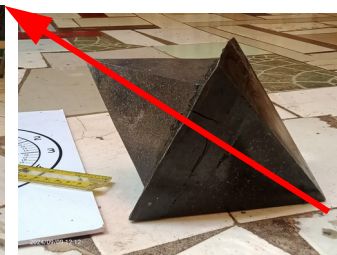
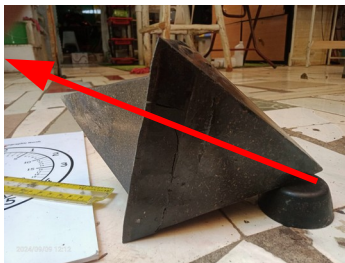
Point your orgonite tip to the direction of the horizontal bearing.



Busting Man-made weather anomalies

4. Set up your pyramid/tower (vertical)

The angle or incline of your pyramid from the ground will vary depending on the height of the anomaly's core. Follow your instinct.

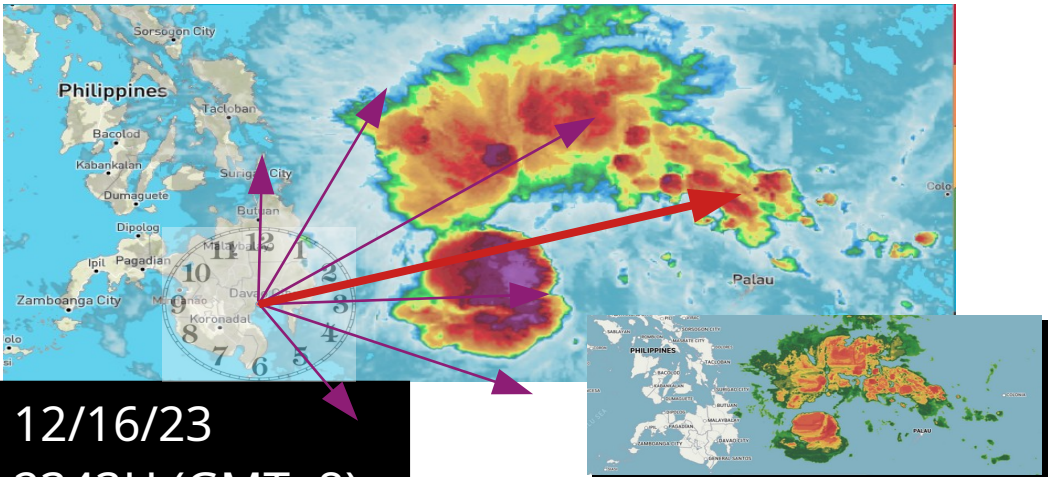


Monitor the weather trackers to determine your progress.. and if you need to make adjustments,

Busting Man-made weather anomalies

5. Add more orgonite when you can

Having more orgonite pyramids/towers allows you to point towards more areas of a man made anomaly – effectively chopping it up into strips.. or even mincing and dicing it like hash browns



12/16/23

2343H (GMT+8)

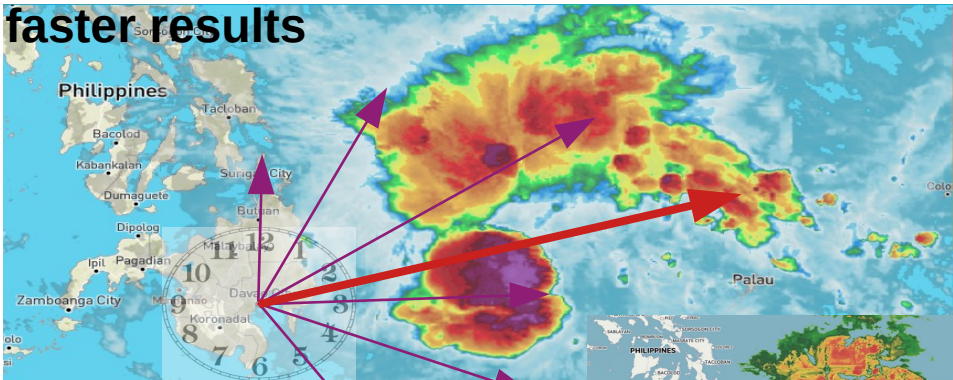
Busting Man-made weather anomalies

6. Manage your expectations

Always look at the bright side...

so you got hit by a tropical storm.. when it should have been a **Cat5 super typhoon!!!**

Always expand your collection – to bring faster results



12/16/23

2343H (GMT+8)

